



inksaver™_{2.0}

Quick Start Guide

ENGLISH



ecography

Downloaded from www.ecography.co.uk

Copyright © 2004-2008 Software Imaging Limited, All Rights Reserved. InkSaver, Software Imaging, and the Software Imaging logo are either registered trademarks or trademarks of Software Imaging Limited. Microsoft®, Windows®, and other names of Microsoft products are trademarks or registered trademarks of Microsoft. Other trademarks are the property of their respective owners. Patent Pending. Software: Product of Canada.

Welcome

InkSaver is an easy-to-use printing solution for inkjet printers that significantly reduces the amount of ink your printer uses. The InkSaver package includes:

- InkSaver CD (includes the User's Guide PDF and the InkSaver application)
- Quick Start Guide



You can access updated FAQs and troubleshooting tips on our support web site at www.inksaver.com/support/inksaver20/.

System Requirements

The minimum system requirements for InkSaver are:

- CD-ROM drive
- Windows® 2000, XP or Vista x86 operating systems
- 20 MB of available hard-disk space
- Minimum 64 MB RAM, recommended 128 MB RAM
- At least one inkjet printer must be installed onto your computer

How InkSaver Works

InkSaver is automatic and works behind the scenes. When it is turned on, the InkSaver settings are applied to every print job. This means that you do not have to access the **InkSaver Configuration** dialog box every time you print. Simply follow the same printing procedures that you normally perform and InkSaver automatically reduces the amount of ink used. When InkSaver is off, no ink savings will occur.

Registration

By registering InkSaver, you will be notified about future releases and updates. Because InkSaver registration is an optional part of the installation procedure, you can also register online at a different time at www.inksaver.com/register.



Note that you must register in order to receive technical support.

If you do not have Internet access, you can print the registration form and mail it to Software Imaging or fax to 1-604-296-3699. To find the form, look in the InkSaver directory on your hard drive for a file called InkSaverReg.html.

If you have a retail copy of InkSaver, you will find your registration number on the sleeve of the CD. If you have a downloaded copy of InkSaver, you will find your registration number in the email that confirmed your order.

About this Quick Start Guide

This Quick Start Guide provides instructions for installing InkSaver and printing a sample page. For more information on using InkSaver, please refer to the User's Guide or use the online help.

For further information on using Windows, your printer software, and any applications that you are printing from, please refer to the appropriate manuals or online help.

To view the User's Guide PDF:

- 1 Click the **Start** button on the Windows taskbar.
- 2 Select **Programs > InkSaver > InkSaver User's Guide**.

Installing InkSaver



*Make sure that the power is turned on and that your printer is installed and properly connected to your computer. Note that you **must** have administrative privileges before you can install InkSaver.*

To install InkSaver:

- 1 Close all open windows and insert the InkSaver CD into your CD-ROM drive.
- 2 In the **InkSaver Setup** dialog box, click the **Next** button and follow the on-screen instructions until you reach the printer selection dialog box.

The dialog box displays a list of the printers currently installed on your computer, including Laserjet printers, which are not supported by InkSaver. If you select one of the Laserjet printers, an error message will display.

- 3 Select the printer that you want to use with InkSaver and click **Next**.

You can select more than one printer from this list.



*If your printer is not on the list, please click **Cancel**. Check if the printer was installed properly and reinstall if required.*

- 4 Select a printer to print the sample page, make sure the **Print Sample Page** check box is selected, and click **Finish**.

We recommend that you print a Sample Page to verify that InkSaver has been properly installed. Use the Sample Page as a reference when you configure the ink savings settings on the **Current Ink Settings** tab.



*If you want to register InkSaver at this time, select the **Register InkSaver Now** check box before clicking **Finish**. When the registration web page appears, click **Register InkSaver** and complete the registration form. Please note that you have to be registered to receive technical support for InkSaver.*

The **InkSaver Configuration** dialog box automatically opens after the installation is complete. Then the **InkSaver Trial Activation** alert box will be automatically displayed in front of the **InkSaver Configuration** dialog box.

5 Do one of the following:

- If you have already purchased InkSaver, enter your **User Name** and **Registration Code**, then click **OK**.
- If you want to continue using the trial version, click **Try**.



To enter a registration code at a later date, click the **Help** button on the **InkSaver Configuration** dialog box and select **Enter Registration Code**. For more information about the InkSaver Configuration dialog box, please refer to the InkSaver User Guide or Online Help "About the InkSaver Configuration Dialog Box" on page 9.

Congratulations, you have completed the InkSaver installation process!

Accessing InkSaver

You can access InkSaver via the InkSaver icon on the Windows taskbar or by selecting **InkSaver** from the **Programs** menu.

To access InkSaver from the Programs menu:

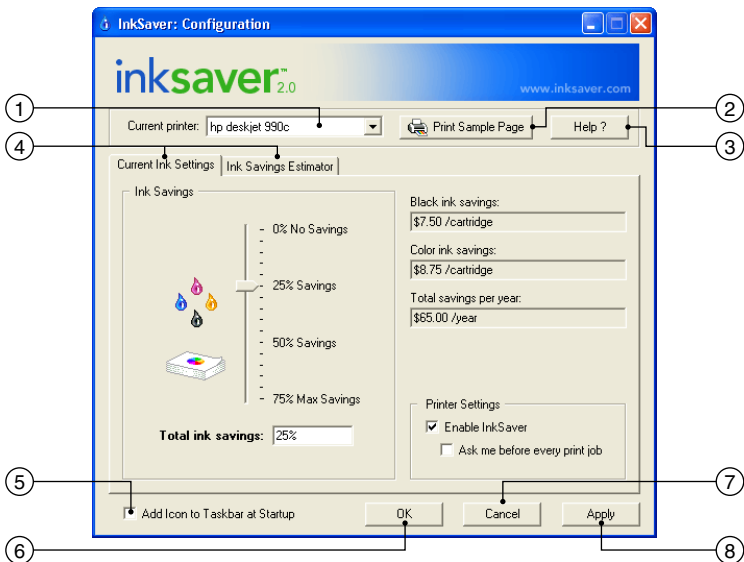
- 1 Click the **Start** button on the Windows taskbar.
- 2 Select **Programs > InkSaver > InkSaver**.

To access InkSaver via the Windows taskbar:

- 1 Right-click or double-click the InkSaver icon in the taskbar.
- 2 If you right-clicked the icon, select **Configure InkSaver** from the shortcut menu.



About the InkSaver Configuration Dialog Box



The **InkSaver Configuration** dialog box contains the following features:

- ① **Current Printer** displays the printer that you are applying InkSaver settings to. Please refer to the InkSaver User's Guide or the Online Help if you are using InkSaver with more than one printer.
- ② **Print Sample Page** provides print quality samples based on different levels of ink savings. Refer to this Sample Page to select the level of ink savings that best suits your needs.
- ③ **Help** gives you access to the online help menu.
- ④ Click the tabs to move between the following:
 - **Current Ink Settings** contains adjustable ink settings. This is the default tab that displays whenever you open the InkSaver Configuration dialog box.
 - **Ink Savings Estimator** helps you track your ink savings.
- ⑤ Select the **Add Icon to Taskbar at Startup** check box if you want the InkSaver icon to appear in the taskbar when you turn your computer on.
- ⑥ **OK** saves changes to settings and closes the **InkSaver Configuration** dialog box.
- ⑦ **Cancel** closes the **InkSaver Configuration** dialog box without saving any changes you have made.
- ⑧ **Apply** saves changes to your settings without closing the **InkSaver Configuration** dialog box.

Uninstalling InkSaver

- 1 Click the **Start** button on the Windows taskbar.
- 2 Select **Programs > InkSaver > Uninstall InkSaver**.
- 3 Select **Uninstall InkSaver** and click **Next**.
- 4 Follow the instructions that appear on your screen.
- 5 When the procedure is complete, click **Finish**.

Getting Help

Software Imaging offers comprehensive technical support to help you resolve any questions you might have. By registering InkSaver, you qualify for technical support by email. Contact Software Imaging Technical Support at www.inksaver.com/support/inksaver20/. You can also browse through our FAQs that are updated regularly to respond to our customers' questions. If you do not have Internet or email access, you can contact us by fax at 1-604-296-3636.

www.inksaver.com

Downloaded from www.ecography.co.uk