



ink**saver**[™] 2.0

User's Guide

ENGLISH



ecography

Downloaded from www.ecography.co.uk

InkSaver 2.0 User's Guide

Copyright© 2004-2008 Software Imaging Limited. All Rights Reserved. InkSaver, Software Imaging , "Saving you money every time you print" and the Software Imaging logo are either registered trademarks or trademarks of Software Imaging Limited . Canon is a registered trademark of Canon, Inc. EPSON is a registered trademark of Seiko Epson Corporation (SEC). HP and Deskjet are trademarks of the Hewlett-Packard Company. Lexmark is a registered trademark of Lexmark International, Inc. Use of registered trademarks and trademarks is for descriptive purposes only; the respective trademark holders have not endorsed or approved this product. Patent pending.

Contents

Welcome	4
System Requirements	4
What InkSaver Can Do	4
How InkSaver Works	4
Registration	5
About this User's Guide	5
Getting Help	5
Getting Started	6
Installing InkSaver	6
Uninstalling InkSaver	8
InkSaver Basics	9
Accessing InkSaver	9
About the InkSaver Configuration Dialog Box	10
Saving Changes to InkSaver Settings	11
Closing the InkSaver Configuration Dialog Box	11
Printing an Ink Savings Sample Page	12
Accessing the Online Help System	13
Removing the InkSaver Icon from the Taskbar	13
Current Ink Settings	15
Enabling and Disabling InkSaver	15
Adjusting the Level of Ink Savings	16
Displaying the Ask Before Printing Dialog Box	17
Printing with the Ask Before Printing Dialog Box	18
Ink Savings Estimator	19
Estimating Your Ink Cartridge Costs and Savings	19
Multiple Inkjet Printers	21
Enabling and Disabling InkSaver for Multiple Printers	21
Configuring InkSaver for Multiple Printers	22
Adjusting Ink Savings for Multiple Printers from the Shortcut Menu ...	23
Adding Printers	24
Removing Printers	24
Troubleshooting	26
Installation and Setup Problems	26
Performance and Quality Issues	26
InkSaver Trial Alert Boxes	27
Printer Error Messages	28
End User License Agreement	29

Welcome

InkSaver is an easy-to-use printing solution for inkjet printers that significantly reduces the amount of ink your printer uses. Two editions are available, a retail and an Internet-download edition.

The retail edition includes:

- InkSaver CD (includes the User's Guide PDF and the InkSaver application)
- Quick Start Guide

The Internet download edition includes:

- InkSaver application
- Quick Start Guide PDF
- User's Guide PDF



You can access updated FAQs and troubleshooting tips on our support web site at www.inksaver.com/support/inksaver20/.

System Requirements

The minimum system requirements for InkSaver are:

- CD-ROM drive for the retail version
- Windows 2000, XP or Vista x86 operating systems
- Minimum of 20 MB of available hard-disk space
- Minimum of 64 MB RAM (128 MB is recommended)
- At least one inkjet printer must be installed onto your computer

What InkSaver Can Do

InkSaver provides the following features:

- Reduces the amount of black and color ink that is printed on a page
- Allows you to select the print quality and ink savings levels that best suit your needs
- Supports multiple printers connected to your computer
- Estimates the amount of money you will save by using InkSaver
- Supports parallel, USB, serial and TCP/IP printing

How InkSaver Works

InkSaver is automatic and works behind the scenes. When it is turned on, the InkSaver settings are applied to every print job. This means that you

do not have to access the **InkSaver Configuration** dialog box every time you print. Simply follow the same printing procedures that you normally perform and InkSaver automatically reduces the amount of ink used. When InkSaver is off, no ink savings will occur.

Registration

By registering InkSaver, you will be notified about future releases and updates. Because InkSaver registration is an optional part of the installation procedure, you can also register online at a different time at www.inksaver.com/register. Note that you must register in order to receive technical support.

About this User's Guide

This User's Guide provides complete instructions for setting up and operating InkSaver. For further information on using Windows, your printer, your printer software, and any applications that you are printing from, please refer to the appropriate manuals or online help.

The following document conventions are used throughout this manual:

Bold Indicates items, such as buttons and menus, that are on the **InkSaver Configuration** dialog box and the shortcut menu.



Indicates an important message about InkSaver that you need to pay attention to.



Indicates a tip or note about using InkSaver.

Getting Help

Software Imaging offers comprehensive technical support to help you resolve any questions you might have. By registering InkSaver, you qualify for Technical Support by email. Contact Software Imaging Technical Support at www.inksaver.com/support/inksaver20/. You can also browse through our FAQs that are updated regularly to respond to our customers' questions. If you do not have Internet or email access, you can contact us by fax at 1-604-296-3636.

Chapter 2 **Getting Started**

This chapter addresses the following topics:

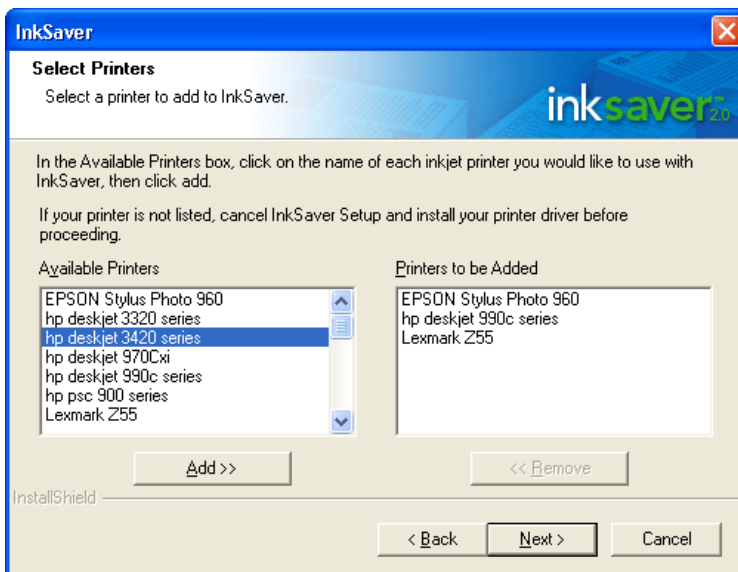
- Installing InkSaver
- Uninstalling InkSaver

Installing InkSaver

⚠ Make sure that the power is turned on and that your printer is installed and properly connected to your computer. Note that you **must** have administrative privileges before you can install InkSaver.

To install InkSaver:


- 1 Close all open windows and do one of the following:
 - For the retail edition, insert the InkSaver CD into your CD-ROM drive.
 - For the Internet edition, download InkSaver from www.inksaver.com and follow the instructions on the web page.
- 2 In the **Welcome to the InstallShield Wizard** dialog box, click the **Next** button and follow the on-screen instructions until you reach the **Select Printers** dialog box.



The dialog box displays a list of the printers currently installed on your computer, including laserjet printers, which are not supported by InkSaver. If you select one of the laserjet printers, an error message will display.


- 3 Select the printer that you want to use with InkSaver, click **Add**, and then click **Next**.

You can select more than one printer from this list.

-  If your printer is not on the list, please click **Cancel**. Check if the printer was installed properly and reinstall if required.

- 4 Make sure the **Print Sample Page** check box is selected, select a printer to print the sample page, and click **Finish**.

We recommend that you print a Sample Page to verify that InkSaver has been properly installed. Use the Sample Page as a reference when you configure the ink savings settings on the **Current Ink Settings** tab.

-  If you want to register **InkSaver** at this time, select the **Register InkSaver Now** check box before clicking **Finish**. When the registration web page appears, click **Register InkSaver** and complete the registration form. Please note that you have to be registered to receive technical support for InkSaver.

The **InkSaver Configuration** dialog box automatically opens after the installation is complete, and the **InkSaver Trial Activation** alert box is displayed in front of the **InkSaver Configuration** dialog box.

- 5 Do one of the following:
 - If you have already purchased InkSaver, enter your **User Name** and **Registration Code**, then click **OK**.
 - If you want to continue using the trial version, click **Cancel**.

To enter a registration code at a later date, click the **Help** button on the **InkSaver Configuration** dialog box and select **Enter Registration Code**. For more information about the **InkSaver Configuration** dialog box, please refer to "About the InkSaver Configuration Dialog Box" on page 10.

Uninstalling InkSaver

To uninstall InkSaver:

- 1 Click the **Start** button on the Windows taskbar.
- 2 Select **Programs > InkSaver > Uninstall InkSaver**.
- 3 Select **Uninstall InkSaver** and click **Next**.
- 4 In the alert box, click **OK**.
- 5 When the procedure is complete, click **Finish**.

Chapter 3 **InkSaver Basics**

This chapter addresses the following topics:

- Accessing InkSaver
- About the InkSaver Configuration Dialog Box
- Saving Changes to InkSaver Settings
- Closing the InkSaver Configuration Dialog Box
- Printing an Ink Savings Sample Page
- Accessing the Online Help System
- Removing the InkSaver Icon from the Taskbar

Accessing InkSaver

You can access InkSaver via the InkSaver icon on the Windows taskbar or by selecting **InkSaver** from the **Programs** menu.

To access InkSaver from the Programs menu:

- 1 Click the **Start** button on the Windows taskbar.
- 2 Select **Programs > InkSaver > InkSaver**.

To access InkSaver via the Windows taskbar:

- 1 Right-click or double-click the InkSaver icon in the taskbar.

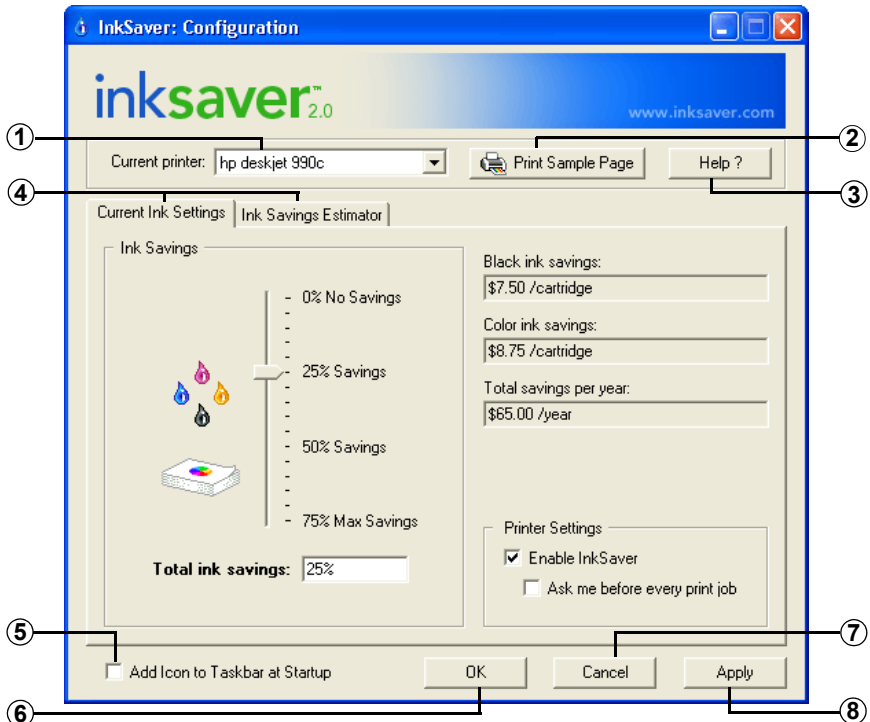


- 2 If you right-clicked the icon, select **Configure InkSaver** from the shortcut menu.

💡 You can use the shortcut menu instead of the **InkSaver Configuration** dialog box to adjust some of the InkSaver settings. For example, you can adjust ink savings levels, disable InkSaver, and remove the InkSaver icon from the taskbar.

About the InkSaver Configuration Dialog Box

The **InkSaver Configuration** dialog box contains the following features:



- ① **Current printer** displays the printer that you are applying InkSaver settings to. This is a drop-down box that lists multiple printers if more than one printer is installed on your computer and configured to operate with InkSaver. For more information on using multiple printers, please refer to “Multiple Inkjet Printers” on page 21.
- ② **Print Sample Page** provides print quality samples based on different levels of ink savings. Refer to this Sample Page to select the level of ink savings that best suits your needs.
- ③ **Help** gives you access to the online help menu.

- ④ Click the tabs to move between the following:
 - **Current Ink Settings** contains adjustable ink settings. This is the default tab that displays whenever you open the **InkSaver Configuration** dialog box. For more information about the contents of this tab, see “Current Ink Settings” on page 15.
 - **Ink Savings Estimator** lets you track your ink savings. For more information about the contents of this tab, see “Ink Savings Estimator” on page 19.
- ⑤ Select the **Add Icon to Taskbar at Startup** check box if the InkSaver icon has been removed from the taskbar and you want it to appear in the taskbar the next time you start your computer.
- ⑥ **OK** saves changes to settings and closes the **InkSaver Configuration** dialog box.
- ⑦ **Cancel** closes the **InkSaver Configuration** dialog box without saving any changes you have made. If you click **Apply** and then **Cancel**, your changes are still saved.
- ⑧ **Apply** saves changes to your settings without closing the **InkSaver Configuration** dialog box.

Saving Changes to InkSaver Settings

Whenever you adjust your ink settings or add new values to the **Ink Savings Estimator**, you need to save these changes. To do this, use either the **Apply** or the **OK** button.

To save the InkSaver Configuration settings:

- 1 In the **InkSaver Configuration** dialog box, adjust the settings.
- 2 Do one of the following:
 - Click the **OK** button to save the changes and close the dialog box.
 - Click the **Apply** button to save the changes without closing the dialog box. If you click **Cancel** at a later time, your changes are still saved.

Closing the InkSaver Configuration Dialog Box

You can close the **InkSaver Configuration** dialog box at any time.

To close the InkSaver Configuration dialog box:

- Click the **Cancel** button at the lower right corner of the **InkSaver Configuration** dialog box.

By clicking the **Cancel** button, any changes will not be saved. To save your changes, click **OK** or **Apply**. If you click **Apply** and then **Cancel**, your changes are still saved.

Printing an Ink Savings Sample Page

You can print the Sample Page at any time. This page demonstrates the print quality that can be achieved with different levels of ink savings. Use the Sample Page to select the ink savings levels that work best for you. To properly display the different savings levels, the Sample Page should be printed in your printer's Normal print setting.

InkSaver 2.0 Sample Page		Refer to this page when adjusting your Ink Settings.	
①	0% Savings		③ This text was printed at 0% ink savings. InkSaver reduces the amount of ink used by your inkjet printer, extending the life of your ink cartridges.
②	5% Savings		④ This text was printed at 5% ink savings. InkSaver reduces the amount of ink used by your inkjet printer, extending the life of your ink cartridges.
	10% Savings		This text was printed at 10% ink savings. InkSaver reduces the amount of ink used by your inkjet printer, extending the life of your ink cartridges.
	20% Savings		This text was printed at 20% ink savings. InkSaver reduces the amount of ink used by your inkjet printer, extending the life of your ink cartridges.
	30% Savings		This text was printed at 30% ink savings. InkSaver reduces the amount of ink used by your inkjet printer, extending the life of your ink cartridges.
	40% Savings		This text was printed at 40% ink savings. InkSaver reduces the amount of ink used by your inkjet printer, extending the life of your ink cartridges.
	50% Savings		This text was printed at 50% ink savings. InkSaver reduces the amount of ink used by your inkjet printer, extending the life of your ink cartridges.
	75% Savings		This text was printed at 75% ink savings. InkSaver reduces the amount of ink used by your inkjet printer, extending the life of your ink cartridges.

- ① This column displays the different ink savings levels, ranging from 0% to 75%.

- ② Refer to this column to determine the best savings level for printing photos.
- ③ Refer to this column to determine the color quality for printing business charts and other graphics.
- ④ Refer to this column to determine the best savings level for printing black text.

To print a sample page:

- 1 In the **InkSaver Configuration** dialog box, click the **Print Sample Page** button.
- 2 Click **OK** to close the **InkSaver Configuration** dialog box, as required.

Accessing the Online Help System

InkSaver has an online help system that includes instructions for using InkSaver.

To access the online help menu:

- 1 In the **InkSaver Configuration** dialog box, click the **Help** button.
- 2 From the shortcut menu, select **Contents and Index**.

Removing the InkSaver Icon from the Taskbar

The InkSaver icon is set, by default, to appear on the Windows taskbar. If you do not want the InkSaver icon to appear on the taskbar, you can remove it. Once the icon is removed, you cannot access the shortcut menu. To open the **InkSaver Configuration** dialog box, you will need to access it from the **Programs** menu.

To remove the InkSaver icon from the taskbar:

- 1 Right-click the InkSaver icon on the Windows taskbar.



- 2 From the shortcut menu, select **Remove Icon from Taskbar**.

The InkSaver icon is removed from the taskbar. To restore the InkSaver icon to the taskbar, restart your computer.

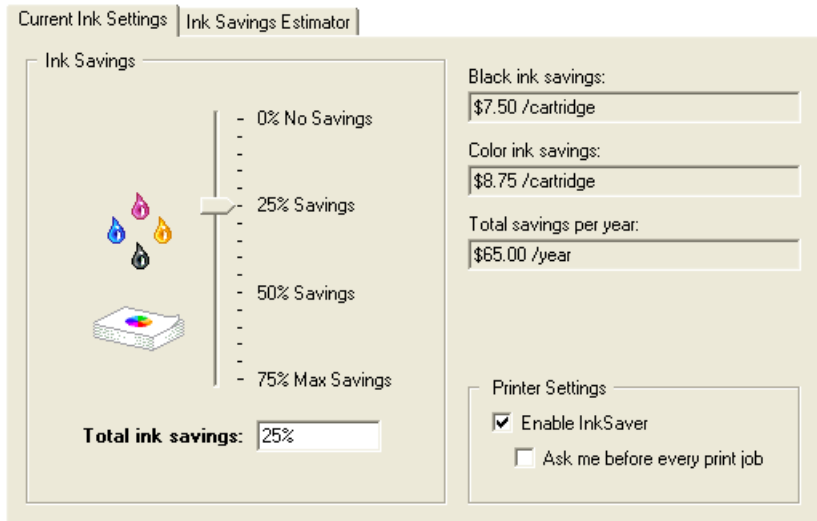
- 💡 If you want the InkSaver icon to appear in the taskbar again, you can select the **Add Icon to Taskbar at Startup** check box in the **InkSaver Configuration** dialog box. The icon will appear in the taskbar the next time you turn your computer on.

Chapter 4 **Current Ink Settings**

This chapter addresses the following topics:

- Enabling and Disabling InkSaver
- Adjusting the Level of Ink Savings
- Displaying the Ask Before Printing Dialog Box
- Printing with the Ask Before Printing Dialog Box



Most of these procedures are performed on the **Current Ink Settings** tab.



Enabling and Disabling InkSaver

When InkSaver is on, the ink savings you selected on the **Current Ink Settings** tab are applied to every print job. When InkSaver is off, no ink savings occur. You can turn InkSaver on or off from:

- The **InkSaver Configuration** dialog box
- The InkSaver icon on the Windows taskbar

If InkSaver is turned on, and the icon has not been removed from the taskbar, the icon is . If InkSaver is turned off, the icon is .

To turn InkSaver on or off from the InkSaver Configuration dialog box:

- 1 Open InkSaver. Please see “Accessing InkSaver” on page 9.
- 2 In the **Current Ink Settings** tab, select the **Enable InkSaver** check box.
If the check box contains a check mark, InkSaver is on. Otherwise, it is off.
- 3 Click **Apply** or **OK**.

To turn InkSaver on or off from the shortcut menu:

- 1 Right-click the InkSaver icon in the taskbar.
- 2 From the shortcut menu, select **Disable InkSaver** to turn InkSaver off or **Enable InkSaver** to turn it on.

Adjusting the Level of Ink Savings

With InkSaver, you can adjust the level of ink savings for your ink cartridges. The available range is 0% to 75%. Selecting a higher level of ink savings affects the print quality. The print quality varies depending on the following:

- The brand of printer
- The model of printer
- The resolution setting of the printer (for example, Best, Normal, or Draft)

The ink savings settings are global settings. This means that they are not configured for different paper types. We recommend that you test a variety of settings to find the one that works best for you. The default setting is 25% savings.

You can adjust ink levels from:

- The **InkSaver Configuration** dialog box
- The InkSaver shortcut menu
- The **InkSaver Ask Before Printing** dialog box

This section describes the first two methods. To learn more about the **InkSaver Ask Before Printing** dialog box, please see “Printing with the Ask Before Printing Dialog Box” on page 18.


To adjust the ink savings levels from the InkSaver Configuration dialog box:

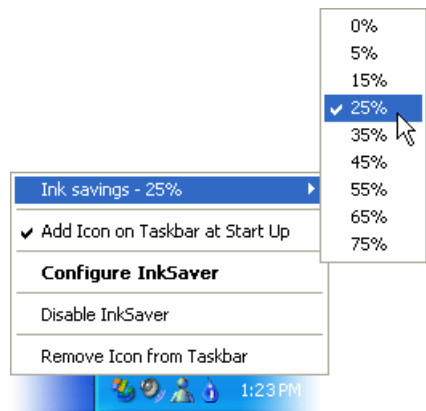
- 1 Open InkSaver. Please see “Accessing InkSaver” on page 9.
- 2 In the **Current Ink Settings** tab, do one of the following:
 - Move the **Ink Savings** slider to select the ink savings level.
 - Enter the ink savings level in the **Total ink savings** box.

The available ink savings range from 0% to 75%.
- 3 Click **OK** or **Apply** to save the settings.

To adjust the ink savings levels from the InkSaver shortcut menu:

- 1 Right-click the InkSaver icon in the taskbar.
- 2 From the shortcut menu, select **Ink savings**.
- 3 Select a new ink savings level.

 If your computer is configured to use multiple printers, please see “Adjusting Ink Savings for Multiple Printers from the Shortcut Menu” on page 23.



Displaying the Ask Before Printing Dialog Box

You can set InkSaver to display a confirmation dialog box whenever you print. This dialog box contains adjustable ink settings. This is useful because it allows you to change the settings to suit each print job without manually opening the **InkSaver Configuration** dialog box.

To display the confirmation dialog:

- 1 Open InkSaver. Please see “Accessing InkSaver” on page 9.
- 2 In the **Current Ink Settings** tab, select the **Ask me before every print job** check box.

The next time you print, the **InkSaver Ask Before Printing** dialog box will appear.
- 3 Click **Apply** or **OK**.

Printing with the Ask Before Printing Dialog Box

If you set the **InkSaver Ask Before Printing** dialog box to display, you can adjust the ink settings each time you print. These are identical to the settings that display on the **Current Ink Settings** tab of the **InkSaver Configuration** dialog box.

When you change the settings in the **InkSaver Ask Before Printing** dialog box, you can save the changes so that they become the print settings for subsequent print jobs or you can apply them to the current print job only. You can readjust the settings every time the dialog box appears.

To Print with the Ask Before Printing dialog box:

- 1 Perform the standard printing procedure for the application you are using.
- 2 In the standard Windows print dialog box, click **OK**.
- 3 In the **InkSaver Ask Before Printing** dialog box, adjust the settings, as required.
- 4 Do one of the following:
 - To save the new settings so that they are applied to subsequent print jobs, click the **Save Changes** button.
 - To apply the new settings to the current print job only, do not click the **Save Changes** button.
- 5 Click the **Print** button.

Chapter 5 Ink Savings Estimator

This chapter explains how to use InkSaver to estimate the amount of money you can save on ink cartridges.

Current Ink Settings		Ink Savings Estimator	
Estimated cost per year without InkSaver			
	Black Ink	Color Inks	
Average cost per cartridge:	30.00	35.00	
Cartridges used per year:	4	4	
Total cost per year:	\$120.00	+ \$140.00	= \$260.00 /year
Estimated savings per year with InkSaver			
	Black Ink	Color Inks	
Current ink settings:	25%	25%	
Savings per cartridge:	\$7.50	\$8.75	
Total savings per year:	\$30.00	+ \$35.00	= \$65.00 /year

Estimating Your Ink Cartridge Costs and Savings

With InkSaver, you can estimate:


- The cost of black and color ink cartridges you use in a year
- The total cost of all ink cartridges you use in a year
- The total annual savings for each type of cartridge

💡 The first time you open the InkSaver Configuration dialog box, the default values in the **Average cost per cartridge** boxes are \$30.00 for black cartridges and \$35.00 for color cartridges. Both the black and color cartridges have default values of 4 in the **Cartridges used per year** boxes.

To use the Ink Savings Estimator:

- 1 In the **InkSaver Configuration** dialog box, click the **Ink Savings Estimator** tab.


- 2 In the **Average cost per cartridge** box beneath **Black Ink**, enter the average cost of the black ink cartridges that you use.
The value can have up to two decimal places. For example, \$35.87 or \$37.00. Note that you should not enter the currency symbol (for example, \$) when you enter the value.
- 3 In the **Average cost per cartridge** box beneath **Color Inks**, enter the average cost of the color ink cartridges that you use.
The value can have up to two decimal places.
If your printer has separate cartridges for each color, enter the cost of one of the cartridges.
- 4 In the **Cartridges used per year** box beneath **Black Ink**, enter the number of black ink cartridges you use per year.
- 5 In the **Cartridges used per year** box beneath **Color Inks**, enter the number of color ink cartridges you use per year.
If your printer has separate cartridges for each color, enter the total number of all of the color cartridges used per year.
- 6 Click **Apply** to complete the estimation.
The totals appear in the **Cost without InkSaver** and **Savings with InkSaver** boxes.

 To change the values in the **Current Ink Settings** boxes, you need to adjust the ink savings levels in the **Current Ink Settings** tab. For further details, please see “Adjusting the Level of Ink Savings” on page 16.

Chapter 6 **Multiple Inkjet Printers**

If you only have one inkjet printer installed on your computer, you do not need to read this chapter. If you want to install multiple printers onto your computer, please refer to the documentation that comes with your operating system for further instructions. If you have more than one inkjet printer installed on your computer, you can set InkSaver to operate with all inkjet printers. This chapter addresses the following topics:



- Enabling and Disabling InkSaver for Multiple Printers
- Configuring InkSaver for Multiple Printers
- Adjusting Ink Savings for Multiple Printers from the Shortcut Menu
- Adding Printers
- Removing Printers

 If you want to use InkSaver with multiple inkjet printers, you can either add the printers to InkSaver during installation (please see “Installing InkSaver” on page 6) or at a later date (please see “Adding Printers” on page 24).

Enabling and Disabling InkSaver for Multiple Printers

To turn InkSaver on or off for all printers that are currently installed to work with InkSaver, you must repeat the procedure for each printer. You can turn InkSaver on or off from:

- The **InkSaver Configuration** dialog box
- The **InkSaver** icon on the Windows taskbar

For multiple printers, if the **InkSaver** icon has not been removed from the taskbar, the icon is  as long as InkSaver is turned on for at least one printer. The off icon, , is only displayed if InkSaver is turned off for all printers.

To turn InkSaver on or off for multiple printers from the InkSaver Configuration dialog box:

- 1 Open InkSaver. Please see “Accessing InkSaver” on page 9.
- 2 From the **Current Printer** box, select the printer you want to turn on or off.

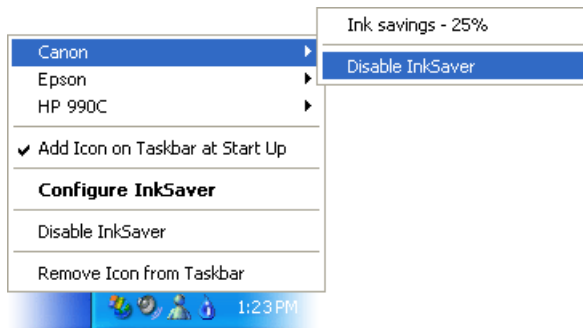
This box only displays inkjet printers that have been added to InkSaver.

- 3 In the **Current Ink Settings** tab, select the **Enable InkSaver** check box.
If the check box contains a check mark, InkSaver is on. Otherwise, it is off.
- 4 Click **Apply** to save the changes.
- 5 Repeat the procedure for other printers, as required.

To turn InkSaver on or off for multiple printers from the shortcut menu:

- 1 Right-click the InkSaver icon in the taskbar.

- 2 From the shortcut menu, select the printer that you want to use.



- 3 Select **Disable InkSaver** to turn InkSaver off or **Enable InkSaver** to turn it on.
- 4 Repeat the procedure for other printers, as required.

Configuring InkSaver for Multiple Printers

Once InkSaver is installed on your computer, you need to configure the ink settings for all printers that are set to operate with InkSaver. The ink settings include all items that display on the **Current Ink Settings** tab.

- ❗ You cannot use InkSaver to select the default printer for your operating system. For instructions on selecting a default printer, please refer to the documentation that came with your printer. If you decide to select another default printer, you do not need to change the ink savings settings.

To configure InkSaver for Multiple Printers from the InkSaver Configuration dialog box:

- 1 Open InkSaver. Please see “Accessing InkSaver” on page 9.
- 2 Click the arrow on the right side of the **Current Printer** box to select the printer you want to configure.


If you have adjusted the InkSaver settings for the current printer, the **Save Changes** dialog box appears. This saves the ink settings for the current printer.

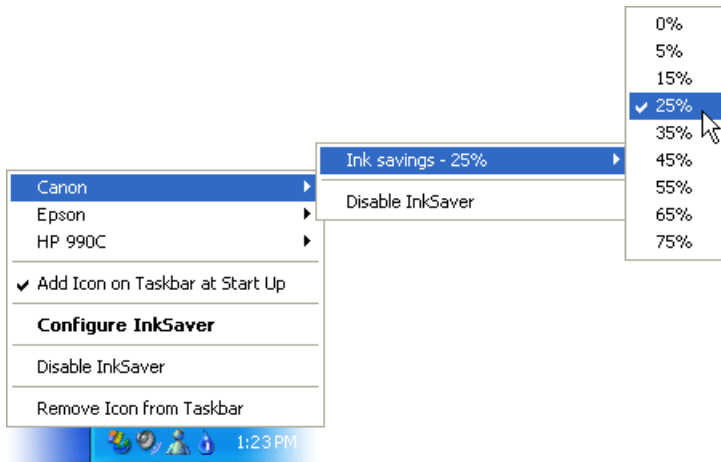
- 3 Click **Yes** to save the settings, as required.
- 4 Adjust the settings for the new printer and click **OK** or **Apply** when you are finished. For further details about ink settings, please see “Current Ink Settings” on page 15.

Adjusting Ink Savings for Multiple Printers from the Shortcut Menu

If you have installed InkSaver to operate with multiple printers, you can also adjust the ink savings for each printer from the shortcut menu.

To adjust the ink savings for multiple printers from the shortcut menu:

- 1 Right-click the **InkSaver** icon, , in the Window taskbar.
- 2 From the shortcut menu, select a printer.



- 3 Select **Ink savings**.

- 4 Select the new ink savings level.
The new level is automatically added to the **Current Ink Settings** tab for the printer you selected.
- 5 Repeat the procedure for all other printers, as required.

Adding Printers

You can add additional inkjet printers to print with InkSaver, as long as they are already installed on your system.

To add a printer:

- 1 Make sure the **InkSaver Configuration** dialog box is closed.
- 2 Click the **Start** button on the Windows taskbar. Select **Programs > InkSaver > Add or Remove Printers**.
- 3 Select **Add Printer** and click **Next**.
- 4 In the printer selection dialog box, select a new printer, click **Add**, then click **Next**.

Note that you can select more than one printer.

- 5 When the **Maintenance Complete** dialog box appears, click **Finish**.
When you re-open InkSaver, you can select the new printer from the **Current Printers** drop-down box.

Removing Printers

You can remove a printer from the list of printers that are configured to print with InkSaver. A printer cannot be removed if it is the only one configured to print with InkSaver.

To remove a printer:

- 1 Make sure the **InkSaver Configuration** dialog box is closed.
- 2 Click the **Start** button on the Windows taskbar. Select **Programs > InkSaver > Add or Remove Printers**.
- 3 Select **Remove Printer** and click **Next**.
 - If you only have one printer installed, an alert box displays. Click **OK**.
- 4 In the printer selection dialog box, select the printer from the **Available Printers** box, click **Add** and click **Next**.

Note that you can select more than one printer, however InkSaver does not allow you to remove all of the printers that are configured to use InkSaver. If you want to remove all printers, perform the uninstall procedure instead. For this procedure, see “Uninstalling InkSaver” on page 8.

- 5 In the alert box, click **OK** to continue.
- 6 When the **Maintenance Complete** dialog box appears, click **Finish**.
Once the procedure is finished, you cannot use InkSaver to print with the removed printer.

Troubleshooting

Installation and Setup Problems

To solve this problem...	do the following...
I installed the InkSaver CD, but nothing is happening.	<p>If InkSaver Setup does not automatically display, do the following:</p> <ol style="list-style-type: none">1 Click Start on the Windows task bar and click Run.2 In the Open dialog box, type D:\setup.exe (assuming that D:\ is your CD-ROM drive) and click OK.

Performance and Quality Issues

To solve this problem...	do the following...
Can I print more than one photo at a time?	<p>With InkSaver, you can only print one file at a time. However, you can use your photo editor to copy and paste more than one photo into a photo file. Then you can use InkSaver to print the photo file.</p> <p>Refer to your photo editor manual for further instructions on copying and pasting photos.</p>
I tried to print a color photo, but my photo is printing in black and white.	<p>Check to see if your color ink cartridge is properly installed.</p>

InkSaver Trial Alert Boxes

To solve this problem...	do the following...
When I open InkSaver, an alert box displays a message telling me to buy InkSaver.	Do one of the following: <ul style="list-style-type: none"><li data-bbox="675 383 1122 473">• If you want to buy InkSaver, click Buy Now! and follow the instructions on the web page.<li data-bbox="675 493 1141 644">• If you have already purchased the product, click Enter Code. In the alert box, enter your User Name and Registration Code, then click OK.<li data-bbox="675 663 1094 722">• If you want to continue using InkSaver, click Continue Trial.
When I open InkSaver, an alert box displays a message telling me that the InkSaver Trial has expired.	Do one of the following: <ul style="list-style-type: none"><li data-bbox="675 798 1122 888">• If you want to buy InkSaver, click Buy Now! and follow the instructions on the web page.<li data-bbox="675 907 1141 1058">• If you have already purchased the product, click Enter Code. In the alert box, enter your User Name and Registration Code, then click OK.<li data-bbox="675 1078 1141 1137">• If you do not want to buy InkSaver or enter a code, click Close.

Printer Error Messages

If you receive the following error message...

“You have chosen to print on Specialty Paper. It is possible you will encounter an insufficient memory message or receive poor printouts.”

We recommend that you disable InkSaver by clicking the **Disable InkSaver** button. To continue this job with InkSaver, please click the **Print with InkSaver** button.

do the following...

If you click the **Disable InkSaver** button, do one of the following:

- Continue the print job without InkSaver.
- Cancel the print job and replace the specialty paper with a standard paper type before you try printing again.

If you click the **Print with InkSaver** button, continue the print job. If an insufficient memory message appears, cancel the print job and adjust your paper type, as required.

Select the **Remember my preference** check box to automatically apply one of the above options to all subsequent print jobs where specialty paper is used. To remove the setting, click the **Help?** button in the **InkSaver Configuration** dialog box and select **Restore Warning Messages** from the menu.

End User License Agreement

SOFTWARE IMAGING LIMITED. ("SOFTWARE IMAGING") OWNS OR IS OTHERWISE ENTITLED TO GRANT LICENSES IN RESPECT OF THIS SOFTWARE ("SOFTWARE"). YOU, THE END USER, MAY NOT LOAD THE SOFTWARE INTO ANY COMPUTER, USE THE SOFTWARE IN ANY WAY OR COPY IT WITHOUT THE LICENSE AND AUTHORITY OF SOFTWARE IMAGING.

SOFTWARE IMAGING OFFERS YOU A PERSONAL, LIMITED, NON-EXCLUSIVE LICENSE ON THE TERMS AND CONDITIONS OF THIS AGREEMENT ("AGREEMENT").

THIS AGREEMENT CONTAINS TERMS AND CONDITIONS THAT LIMIT THE WARRANTIES AND REMEDIES PROVIDED BY, AND EXCLUDE THE LIABILITY OF, SOFTWARE IMAGING AND/OR ITS SUPPLIERS IN RESPECT OF THE SOFTWARE.

IF YOU WISH TO USE THE SOFTWARE, YOU MUST UNCONDITIONALLY AGREE TO THE TERMS AND CONDITIONS CONTAINED IN THIS AGREEMENT BY CLICKING ON THE "I ACCEPT" BUTTON BELOW BEFORE INSTALLING THE SOFTWARE. YOU WILL ALSO BE DEEMED TO HAVE UNCONDITIONALLY ACCEPTED THE TERMS AND CONDITIONS CONTAINED IN THIS AGREEMENT IF YOU: (1) INSTALL THE SOFTWARE; OR (2) DO NOT RETURN THE SOFTWARE IN ITS ORIGINAL PACKAGING AND WITH ANY ASSOCIATED HARDWARE IN ACCORDANCE WITH THE FOLLOWING PARAGRAPH.

IF YOU DO NOT UNCONDITIONALLY AGREE TO THE TERMS AND CONDITIONS CONTAINED IN THIS AGREEMENT, YOU MAY NOT USE THE SOFTWARE, AND MUST WITHIN 30 DAYS OF THE DATE OF PURCHASE RETURN THE SOFTWARE IN ITS ORIGINAL PACKAGING AND WITH ANY ASSOCIATED HARDWARE UNUSED AND INTACT TO THE PLACE WHERE YOU OBTAINED THEM, UPON WHICH YOU WILL BE ENTITLED TO A FULL REFUND.

Grant of License

SOFTWARE IMAGING licenses the SOFTWARE for both home and business use.

The SOFTWARE is licensed, not sold, to you.

If you acquired the SOFTWARE for home use, grants you a personal, limited, non-exclusive and revocable license to install and use the SOFTWARE only for the use for which it is intended and not further or otherwise and subject to and on the terms and conditions contained in this Agreement. The SOFTWARE may only be installed and used on a single computer that is under your control.

If you acquired the SOFTWARE for business use, SOFTWARE IMAGING grants you a personal, limited, non-exclusive and revocable license, subject to and on the terms and conditions contained in this Agreement, to: (i) install the SOFTWARE on the single computer under your direct control; (ii) use the SOFTWARE in conjunction with the printer devices ordinarily used by you only; (iii) use the SOFTWARE in relation to your internal business operations only; and (iv) use the SOFTWARE only for the use for which it is intended and not further or otherwise.

The Software may include embedded run-time versions of certain third party software ("Embedded Software"). You may use Embedded Software only with the Software and for no other purpose. All references in this Agreement to the SOFTWARE include any Embedded Software included in the SOFTWARE.

Ownership of SOFTWARE

You own only the magnetic or other media on which the suppliers will at all times exclusively own and retain all right, title and interest in and to the SOFTWARE recorded on the media on which it has been supplied together with all subsequent copies of the SOFTWARE. This Agreement does not confer upon you any right, title or interest in or to the SOFTWARE, including without limitation any intellectual property rights in the SOFTWARE.

Restriction on Use

You are not permitted to distribute, rent, lease, lend or sub-license the SOFTWARE to a third party.

You may transfer the SOFTWARE to another individual on the strict condition that you assign all of your rights and obligations under this Agreement to that individual, you erase all copies of the SOFTWARE under your control and stored on any medium (including the hard disc copy and any back up copy), and the other individual agrees, prior to the transfer, to be bound by and to observe and perform in all respects the terms and conditions of this Agreement.

Reservation of Rights

Its suppliers reserve all rights not expressly granted to you in this Agreement.

Duration

This Agreement and the license of the SOFTWARE created by this Agreement are effective until terminated.

This Agreement and the license of the SOFTWARE created by this Agreement:

- (a) will terminate automatically and without notice should you fail to comply with the terms of this Agreement; or
- (b) will terminate automatically should you destroy the SOFTWARE and all copies of the SOFTWARE (including the hard disc copy and any back up copy) and its documentation in your possession; or
- (c) may be terminated at any time by SOFTWARE IMAGING for no cause stated upon SOFTWARE IMAGING giving thirty (30) days notice of termination to you.

In addition, if the SOFTWARE is licensed for trial or evaluation purposes: (a) this Agreement and the license of the SOFTWARE created by this Agreement will terminate automatically and without any notice upon the expiry of the trial period; and (b) the SOFTWARE may contain controls that automatically prohibit use of the SOFTWARE after the expiration of the trial period. The duration of the trial period will be indicated when the software is installed on your computer, and can be found by following the Help - About menu.

Upon termination, you agree to destroy the SOFTWARE and all copies of the SOFTWARE (including the hard disc copy and any back up copy) and its documentation in your possession.

The provisions of this Agreement entitled "Ownership of SOFTWARE", "Warranties and Remedies", "Liability for Infringement", "Limitation of Liability" and "Law" survive the termination of this Agreement.

Copying

The SOFTWARE and its documentation are the subject of Copyright.

The SOFTWARE is licensed to you on the strict understanding that you:

- (a) may not make any copies of the SOFTWARE except for one copy for operational security provided such copy includes all copyright information contained on the original and, you acknowledge and agree that any such copy is subject to and will be used in accordance with the terms and conditions of this Agreement;
- (b) may not nor cause or permit or allow others to modify, adapt, merge, translate, reverse engineer, decompile, disassemble or create derivative works based on the whole or any part of the SOFTWARE or its associated documentation; and
- (c) are legally responsible for any copyright infringement, unauthorized transfer, reproduction or use of the SOFTWARE or its documentation or the breach of this Agreement.

CONSENT.

Warranties and Remedies

The SOFTWARE is supplied by and its suppliers AS IS AND WITH ALL FAULTS and without representation, warranty or condition of any kind.

You shall load and/or use the SOFTWARE entirely at your own risk.

its suppliers do not represent, warrant or make any condition that the SOFTWARE will meet your requirements or that the operation of the SOFTWARE will be uninterrupted or error-free or that defects in the SOFTWARE will be corrected. and its suppliers do not and cannot represent, warrant or make any condition as to the performance of or the results that you may obtain from the SOFTWARE.

THE TERMS OF THIS AGREEMENT ARE IN LIEU OF ALL REPRESENTATIONS, WARRANTIES, CONDITIONS, UNDERTAKINGS, TERMS AND OBLIGATIONS, EXPRESS OR IMPLIED, ARISING BY STATUTE, COMMON LAW, TRADE USAGE, COURSE OF DEALING OR OTHERWISE ALL OF WHICH ARE HEREBY EXCLUDED TO THE FULLEST EXTENT PERMITTED BY LAW. FOR THE AVOIDANCE OF ANY DOUBT, SOFTWARE IMAGING AND ITS SUPPLIERS HEREBY EXPRESSLY DISCLAIM ALL EXPRESS OR IMPLIED REPRESENTATIONS, WARRANTIES AND CONDITIONS OF TITLE, NON-INFRINGEMENT, MERCHANTABILITY, FITNESS FOR A PARTICULAR PURPOSE, PERFORMANCE, DURABILITY, AVAILABILITY, TIMELINESS, ACCURACY OR COMPLETENESS.

Notwithstanding and without prejudice to the foregoing provisions of this Section, SOFTWARE IMAGING may in its discretion replace the SOFTWARE if the media upon which the SOFTWARE is recorded is defective. Any claim submitted by you for replacement media must be made in postage prepaid within 90

days from the date of purchase of the SOFTWARE and must be accompanied by the defective SOFTWARE media and proof of purchase of the SOFTWARE.

You are entirely responsible for the cost of servicing, repairing or correcting the SOFTWARE.

SOME JURISDICTIONS DO NOT PERMIT LIMITATIONS AND EXCLUSIONS SUCH AS THOSE IN THIS AGREEMENT AND THEREFORE SOME OR ALL OF THE LIMITATIONS AND EXCLUSIONS IN THIS AGREEMENT MAY NOT APPLY TO YOU.

THE PROVISIONS OF THIS AGREEMENT ALLOCATE RISKS BETWEEN SOFTWARE IMAGING, ITS SUPPLIERS AND YOU, AND REFLECT THE PRICING OF THE SOFTWARE. YOU AGREE THAT THIS AGREEMENT REASONABLY ALLOCATES THE RISK BETWEEN YOU, SOFTWARE IMAGING AND ITS SUPPLIERS.

Liability for Infringement

If your use of the SOFTWARE as permitted by this Agreement infringes any third party intellectual property right or if we believe that the SOFTWARE is likely to do so, we may, at our option and expense (i) obtain a license permitting you to continue to use the SOFTWARE; (ii) replace or modify the SOFTWARE so that it is no longer infringing and provide you with the necessary replacement or modification; or (iii) if we do not consider (i) or (ii) to be commercially feasible, terminate this Agreement with no further liability to you except for a refund of the amount paid by you for the SOFTWARE.

This section entitled "Liability for Infringement" states our entire liability with respect to any intellectual property infringement by the SOFTWARE.

Limitation of Liability

EXCEPT AS WITH RESPECT TO FINAL DAMAGE AWARDS IN ACTIONS FOR DEATH OR PERSONAL INJURY BY ANY NEGLIGENT ACTS OR OMISSIONS OF SOFTWARE IMAGING, IN NO EVENT SHALL SOFTWARE IMAGING OR ITS SUPPLIERS BE LIABLE (WHETHER IN CONTRACT, TORT, BY STATUTE OR OTHERWISE) FOR ANY LOSS, DAMAGE OR EXPENSE (INCLUDING BUT NOT LIMITED TO DIRECT, INDIRECT, INCIDENTAL AND CONSEQUENTIAL LOSS OR DAMAGE, SPECIAL DAMAGES, DAMAGES FOR LOSS OF USE OR OF DATA, DAMAGES FOR LOSS OF OR INTERRUPTION TO BUSINESS AND DAMAGES FOR LOSS OF PROFITS) OF ANY NATURE HOWSOEVER ARISING AND INCLUDING BUT NOT LIMITED TO ANY LOSS RESULTING DIRECTLY OR INDIRECTLY FROM THE USE OF THE SOFTWARE.

IN NO EVENT SHALL SOFTWARE IMAGING OR ITS SUPPLIER'S LIABILITY TO YOU FOR ALL LOSSES, DAMAGES OR EXPENSES ARISING OUT OF OR RELATED TO THIS AGREEMENT OR YOUR USE OF THE SOFTWARE EXCEED THE AMOUNT PAID BY YOU FOR THE SOFTWARE.

U.S. Government End Users

The SOFTWARE is a "commercial component," as that term is defined in 48 C.F.R. 2.101 (Oct. 2000), consisting of "commercial computer software" and "commercial computer software documentation," as those terms are used in 48 C.F.R. 12.212 (Sept. 1995). Consistent with 48 C.F.R. 12.212 and 48 C.F.R. 227.7202-1 through 227.7202-4 (June 1995), all U.S. government entities acquire the SOFTWARE only with those rights set forth in this Agreement.

Export Controls

You may not download or export the SOFTWARE or its technology except in full compliance with all applicable export and other laws and regulations in effect from time to time in the country in which you are resident or in which you are using the SOFTWARE.

Entire Agreement

This Agreement is the only agreement between you and SOFTWARE IMAGING.

This Agreement and all exhibits referenced herein and attached hereto constitute the entire and exclusive understanding between you and SOFTWARE IMAGING and supersede all proposals, communications and understandings, oral or written, between you and SOFTWARE IMAGING relating to the subject matter of this Agreement. The terms and conditions of this Agreement shall prevail, notwithstanding any variance with any purchase order, correspondence or written instrument submitted by you, whether or not formally accepted or rejected by SOFTWARE IMAGING.

This Agreement may not be amended or modified, except by a subsequent written agreement signed by you and SOFTWARE IMAGING.

This Agreement is binding upon you and your heirs, executors, administrators, personal representatives, successors and permitted assigns, and enures to the benefit of SOFTWARE IMAGING, its suppliers and their respective successors and assigns.

Section Headings

Section headings in this Agreement are for convenience only and shall in no case be considered in construing this Agreement.

Law

The validity, interpretation, and performance of this Agreement, shall be controlled by and construed under the laws of the Province of British Columbia, Canada and the federal laws of Canada applicable therein as if performed wholly within that jurisdiction and without giving effect to the principles of conflict of law. The applicability of the U.N. Convention on Contracts for the International Sale of Goods is expressly excluded.

You irrevocably submit and attorn to exclusive jurisdiction and venue vesting in the British Columbia courts sitting in Vancouver, British Columbia and waive all defences of lack of personal jurisdiction and forum non-conveniens.

If any term, provision, covenant or condition of the Agreement is held invalid or unenforceable for any reason, the remaining provisions shall continue in full force and effect as if the Agreement had been executed with the invalid portion eliminated so long as the Agreement continues to express, without material change, the original intentions of the parties.